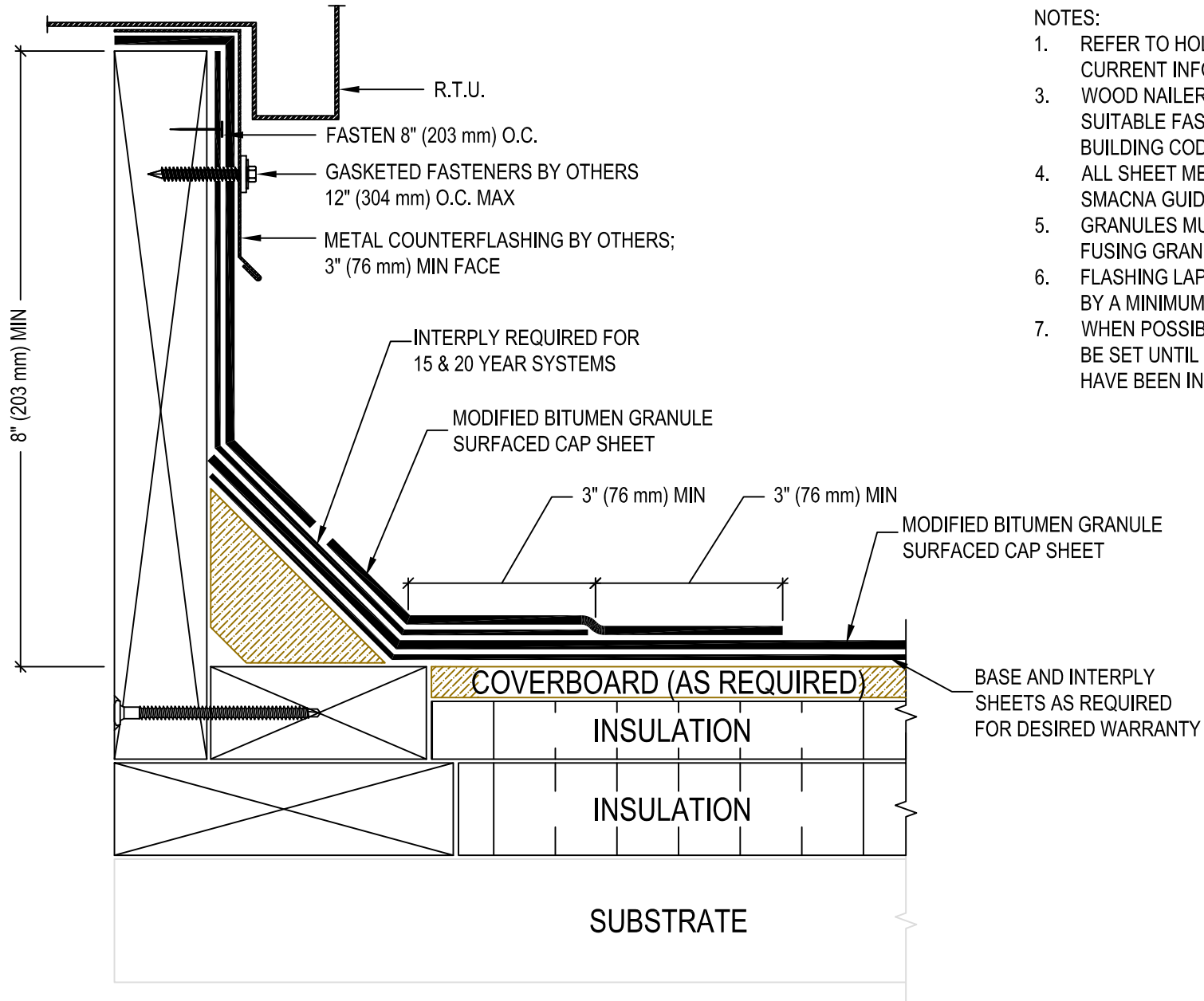


MATERIAL: ASPHALT SYSTEMS
(800) 428-4511 www.holcimelevate.com

ACCEPTABLE SYSTEMS: MODIFIED BITUMEN
MAXIMUM WARRANTY: 20 YEARS

ISSUE / REVISION DATE:
11/07/2022



NOTES:

1. REFER TO HOLCIM ELEVATE WEBSITE FOR MOST CURRENT INFORMATION.
3. WOOD NAILERS MUST BE INSTALLED WITH SUITABLE FASTENERS TO MEET APPLICABLE BUILDING CODES.
4. ALL SHEET METAL IS TO BE INSTALLED PER SMACNA GUIDELINES.
5. GRANULES MUST BE EMBEDDED WHEN THERMALLY FUSING GRANULE SURFACED CAP SHEET.
6. FLASHING LAPS MUST BE OFFSET FROM FIELD LAPS BY A MINIMUM OF 12" (305 mm).
7. WHEN POSSIBLE, MECHANICAL UNITS SHOULD NOT BE SET UNTIL THE ROOF MEMBRANE AND FLASHING HAVE BEEN INSTALLED.